

What is the function of photovoltaic panel controller



What is the function of photovoltaic panel controller



[var functionName = function\(\) {} vs function functionName\(\) {}](#)

The difference is that functionOne is a function expression and so only defined when that line is reached, whereas functionTwo is a function declaration and is defined as soon as its

[What is the purpose of a self executing function in javascript?](#)

Actually, the above function will be treated as function expression without a name. The main purpose of wrapping a function with close and open parenthesis is to avoid polluting the global space.



[Solar Charge Controller 101: A Beginner's Guide](#)

The most basic controller will tell you how much power your solar array has generated, how much you have used, and how much is stored in your batteries.

[What is the \(function \(\) { } \) \(\) construct in JavaScript?](#)

What these functions do is that when the function is defined, The function is immediately called, which saves time and extra lines of code (as compared to calling it on a separate line).





[Solar Charge Controller: Definition, Importance, and](#)

Solar panel controllers help maximize solar output in off-grid residential and commercial photovoltaic systems by regulating the optimal

[What is the use of solar panel controller, NenPower](#)

The primary role of a solar panel controller is to regulate the voltage and current generated by solar arrays. Solar panels produce direct current (DC)



How do function pointers in C work?

359 Function pointers in C can be used to perform object-oriented programming in C. For example, the following lines is written in C:

syntax

I have seen the use of %>% (percent greater than percent) function in some packages like dplyr and rvest. What does it mean? Is it a way to write closure blocks in R?



[How to pass arguments to addEventListener listener function?](#)

Learn how to pass arguments to addEventListener listener functions effectively in JavaScript with this guide.

[What does -> mean in Python function](#)

definitions?

PEP 3107 -- Function Annotations described the specification, defining the grammar changes, the existence of `func.__annotations__` in which they are stored and, the fact that it's use

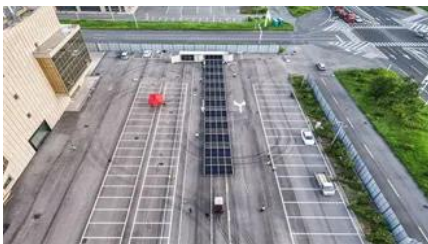


Photovoltaic Controllers: Key Components and Features

Photovoltaic controllers manage and regulate the electricity produced by solar panels in a solar power system. Its main functions include supervising the

MPPT Solar Charge Controllers Explained

What is a solar charge controller? A solar charge controller, also known as a solar regulator, is a device that manages the flow of power from



What is a Solar Charge Controller? - The Unsung Hero of Your Solar

Put simply, a solar charge controller regulates the voltage and current coming from your solar panels before that power is fed into your batteries. The main job is to make sure that your batteries are

What are all the solar system controllers used for PV systems

The MPPT controller can monitor the power of the solar panels in real-time and "track" the maximum power point by adjusting the input voltage, allowing the solar panels to always operate at





[What is a solar charge controller and why are they](#)

Solar charge controllers allow batteries to safely charge and discharge using the output of solar panels. A charge controller is needed any time a battery will be

javascript

```
$ = function() { alert('I am in the $ function'); }  
jQuery is a very famous JavaScript library and they have decided to put their entire framework inside a function named jQuery. To make it easier for people to
```



[What's the difference between __PRETTY_FUNCTION__](#)

About `__func__`: "The identifier `__func__` is implicitly declared by the translator as if, immediately following the opening brace of each function definition, the declaration: `static const char`

[What does the exclamation mark do before the function?](#)

`(function(){})()`; Lastly, `!` makes the expression return a boolean based on the return value of the function. Usually, an immediately invoked function expression (IIFE) doesn't explicitly return



[PWM solar charge controllers: A quick and thorough](#)

PWM (Pulse Width Modulation) solar charge



controllers are electronic devices used in solar energy systems to protect the battery. These

Contact Us

For off-grid system quotes, technical support, or partnerships, please visit:
<https://www.kephamatraining.co.za>