

Super Battery Cabinet Model Specifications



Overview

SBS designs and builds custom DC enclosures for battery systems and/or chargers. A typical cabinet integrates batteries, racking and chargers into an indoor (NEMA 1 or 12) or outdoor (NEMA 3R) rated enclosure.

Super Battery Cabinet Model Specifications



[Vertiv\(TM\) EnergyCore Lithium-Ion Battery Cabinets](#)

It can deliver up to 222.2 kWb (Li7) or 263 kWb (Li5) in 600 mm wide cabinet. It is designed to operate at higher temperatures of up to 30°C and optimized for

[correct way to use super \(argument passing\)](#)

So I was following Python's Super Considered Harmful, and went to test out his examples. However, Example 1-3, which is supposed to show the correct way of calling super when



[Understanding Python super\(\) with __init__\(\) methods](#)

super() lets you avoid referring to the base class explicitly, which can be nice. But the main advantage comes with multiple inheritance, where all sorts of fun stuff can happen.

SuperBattery , Skeleton

Skeleton's SuperBattery is a game-changer in the world of energy storage. It fills the technological gap between supercapacitors and traditional batteries, offering



Specification Sheet



PWRcell 2 Battery Cabinet Can be configured for 9-18 kWh of storage capacity using 3.0 kWh battery modules.

python

30 In Python-3.x you generally don't need the arguments for super anymore. That's because they are inserted magically (see PEP 3135 -- New Super). The two argument call and the



super() and @staticmethod interaction

Things to Know About Python Super [2 of 3] (this one specifically covers unbound super) Things to Know About Python Super [3 of 3] Also, he argues strongly for removing unbound super

[Battery cabinets and accessories](#) [Extendable runtime](#)

cabinets for its modular and standalone UPS series. These battery cabinets with integral overcurrent protection are compatible with a wide range of battery configurations



[Custom, Temperature-Regulating Battery Enclosures](#)

A typical cabinet integrates batteries, racking and chargers into an indoor (NEMA 1 or 12) or outdoor (NEMA 3R) rated enclosure. There are many different options and accessories available, making

super () in Java

super() is a special use of the super keyword where you call a parameterless parent constructor. In general, the super keyword can be used to call overridden methods, access hidden

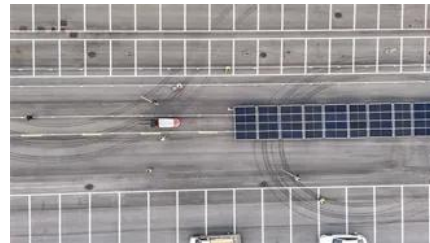


[AttributeError: 'super' object has no attribute](#)

Thirdly, when you call super() you do not need to specify what the super is, as that is inherent in the class definition for Child. Below is a fixed version of your code which should perform

['super' object has no attribute](#) ['__sklearn_tags__'](#)

'super' object has no attribute '__sklearn_tags__'. This occurs when I invoke the fit method on the RandomizedSearchCV object. I suspect it could be related to compatibility issues



[ELS1014, Super P Cabinet with](#) [Integrated UPS Compartment](#)

The Eagle Super P cabinet secures and protects traffic management related electronic components from all forms of outdoor natural elements, including rain, sleet and snow.

[How does Python's super \(\) work with](#) [multiple inheritance?](#)

In fact, multiple inheritance is the only case where super() is of any use. I would not recommend using it with classes using linear inheritance, where it's just useless overhead.



Contact Us

For off-grid system quotes, technical support, or partnerships, please visit:
<https://www.kephamatraining.co.za>