

Sap2000 photovoltaic aluminum bracket tutorial



Sap2000 photovoltaic aluminum bracket tutorial



Sap2000 Photovoltaic Bracket Calculation

As a supplier of Aluminium Solar Panel Brackets, I'm super excited to share with you a step - by - step guide on how to install these brackets. For example, how to use the balcony to install solar panels.

[Sap2000 photovoltaic bracket load analysis](#)

This article investigates a flexible photovoltaic bracket's response to wind vibration. A finite element model is established using SAP2000 software for time course



SAP2000 modelling , Eng-Tips

I'm trying to model a ballasted solar array in SAP2000, since the array has no connection to the ground, does anyone know what kind of supports I should use? It all depends on what exactly

[Structural design of solar mounting bracket / PV support design /](#)

Design software: Bentley?SAP2000?3D3S Design standards: American standard, European standard, Chinese standard. Services scope: solar mounting bracket design, drawing, review, load analysis,





[SAP2000 Videos , STRUCTURAL ANALYSIS AND DESIGN](#)

In this video, we discuss how to define and assign Joint Patterns in SAP2000. This feature allows the user to define more complex distributions of temperature and pressure loads throughout the

[SAP2000 Video Tutorials and Training Free for Beginners and](#)

The Download package contains video tutorials and training for SAP2000 v12 and SAP 2000 v14 for beginners and advanced learners and the working files and examples have the notes and resultant



SAP2000 Manual

Completing the tutorial will give you hands-on experience working with SAP2000, which for most people is the quickest way to become familiar with the program. If you are viewing this manual as a .pdf file,

[SAP2000 Professional Course for Structural Engineers](#)

In this course, you will learn SAP2000 software, a worldwide structural analysis & design software, starting from the basic modeling techniques in SAP2000 to exploring many available advanced



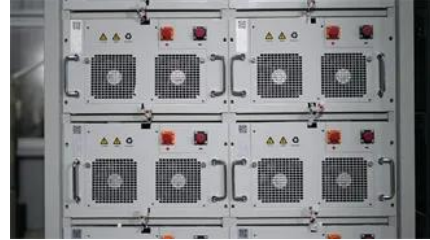
[Research and Design of Fixed Photovoltaic Support Structure](#)

For the the actual demand in a Japanese photovoltaic power, SAP2000 finite element analysis software is used in this paper, based on

Japanese Industrial Standard (JIS C 8955-2011), describing

SAP2000 Structural Analysis Report , PDF

This report summarizes the structural analysis of an aluminum framed structure with a shed roof that supports solar panels. A 3D space frame model was created in SAP2000 software to model the



SAP2000

Page: Steel-girder bridge with variable flange thickness Page: Step-by-step moving-load analysis first steps (SAP2000) Page: Time dependent properties first steps (SAP2000) Page:

Contact Us

For off-grid system quotes, technical support, or partnerships, please visit:
<https://www.kephamatraining.co.za>