

Rectifier huawei



Rectifier huawei



[What is Rectifier? Types of Rectifiers and their Operation](#)

Bridge rectifier is the most commonly used rectifier in electronics and this report will deal with the working and making of one. Simple bridge rectifier circuit is the most popular method for full wave

Rectifier

A rectifier is an electrical device that converts alternating current (AC), which periodically reverses direction, to direct current (DC), which flows in only one direction. The process is known as



R4815N1 Rectifier User Manual V1

Only trained and qualified personnel can be allowed to install or service the rectifier. Each rectifier input is protected by two fuses, one for the live wire and the other for the neutral wire. This product should

[Rectifier Circuits , Diodes and Rectifiers , Electronics Textbook](#)

A full-wave rectifier is a circuit that converts both half-cycles of the AC voltage waveform to an unbroken series of voltage pulses of the same polarity. The resulting DC delivered to the load doesn't "pulsate"





[What is a rectifier, and what are its types?](#)

A rectifier is an essential device that converts AC into DC, allowing electronic equipment to operate properly. Depending on how the rectification is done, rectifiers are divided into four main

Rectifiers and their Applications

What is a Rectifier? A rectifier is a semiconductor device that allows current to flow in one direction, converting alternating current (AC) to direct current (DC).



[Understanding HUAWEI Rectifier Module: Benefits and Applications](#)

The HUAWEI Rectifier Module stands out as a crucial component, designed to convert alternating current (AC) to direct current (DC) for various applications. Understanding its benefits and

Rectifier Module

The R4850G2 is a digital rectifier that converts the 85~300VAC to 53.5 VDC and possesses the characters of high efficiency, high power density, walk-in start, hot-plug, complete protection, and low

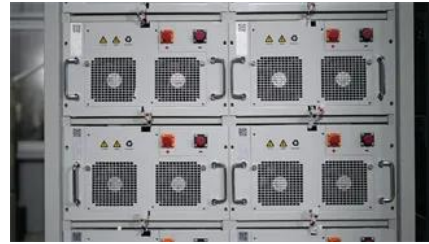


[HUAWEI Rectifier Modules: Key Benefits and Comparisons](#)

When it comes to reliable power solutions for telecommunications and data centers, HUAWEI rectifier modules stand out in the market. Known for their efficiency and innovative

[Rectifier , Types, Definition, & Facts , Britannica](#)

rectifier, device that converts alternating electric current into direct current. It may be an electron tube (either a vacuum or a gaseous type), vibrator, solid-state device, or mechanical device.



[Rectifier - Definition, Types, Applications](#)

A rectifier is an electrical device that converts alternating current (AC) to direct current (DC). It is used to provide DC power for electronic devices and circuits.

[Understanding HUAWEI Rectifiers: Applications and Benefits Explained](#)

HUAWEI Rectifiers are pivotal components in modern power supply solutions, providing efficient and reliable conversion of AC power into DC power. These devices play a crucial role in



[Huawei Rectifier Installation Guide , PDF , Rectifier](#)

The document provides instructions for installing and configuring a new Huawei rectifier system. It outlines the required tools and materials, describes how to

Rectifier

Therefore, the rectifier becomes a very useful component in electronics. This article provides a detailed understanding of the electrical

component known as a rectifier, including its



Rectifier

The rectifier has an AC power input. The rectifier has no AC power input. The rectifier is faulty. The rectifier is being queried. The rectifier is loading an application program. No alarm is generated. The

Contact Us

For off-grid system quotes, technical support, or partnerships, please visit:
<https://www.kephamatraining.co.za>