

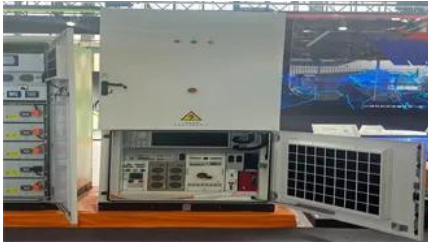
Photovoltaic support layout review table



Overview

This guide walks through the complete layout design process in eight steps, from site assessment through proposal generation. It targets professional installers who need layouts that pass AHJ review on the first submission and maximize energy yield.

Photovoltaic support layout review table



[Photovoltaic support foundation structure drawings](#)

The information contained in this application note is intended to provide designers of First Solar PV module mounting and support systems with both minimum requirements and

[Plans Review Checklist Guide for PV Systems inOne](#)

This document is to provide an aid to whomever reviews rooftop photovoltaic plans. All National Electrical Code (NEC), International Residential Code (IRC), International Building Code (IBC) and



[Solar Photovoltaic: SPECIFICATION, CHECKLIST AND GUIDE](#)

About the Renewable Energy Ready Home Specifications Assumptions of the RERH Solar Photovoltaic Specification Builder and Specification Limitations 1.5 Document the solar resource potential at the designated array location 3.3 Install a conduit for the AC wire run from the designated inverter location to the electric service panel 4.2 Record the name and Web address of the electric utility service provider 5.1 Landscape Plan 5.2 Placement of non-array roof penetrations and structural building elements Appendix A: RERH Labeling Guidance The Renewable Energy Ready Home (RERH) specifications were developed by the U.S. Environmental Protection Agency (EPA) to assist builders in designing and constructing homes equipped with a set of features that make the installation of solar energy systems after the completion of the home's construction easier and less expensive. The specifications See more on

Searches you might like

solar design photovoltaic panels photovoltaic systems solar panel diagram cdn-website

Plans Review Checklist Guide for PV Systems in One- and Two

This document is to provide an aid to whomever reviews rooftop photovoltaic plans. All National Electrical Code (NEC), International Residential Code (IRC), International Building Code (IBC) and

[Structures and support profiles for photovoltaic modules](#)

The support structures are the elements that allow the fixing of the modules on the roofs where the photovoltaic installation must be housed, constituting a main element of the solution. Circutor offers a



[Solar Panel Layout Design: Step-by-Step Guide , SurgePV](#)

This guide walks through the complete layout design process in eight steps, from site assessment through proposal generation. It targets professional installers who need layouts that

[Solar Photovoltaic: SPECIFICATION, CHECKLIST AND GUIDE](#)

The RERH specifications and checklists take a builder and a project design team through the steps of assessing a home's solar resource potential and defining the minimum structural and system





Structural Criteria for Residential Flush-Mounted Solar Arrays

Unaltered manufactured plated-wood trusses may be assumed to be code compliant and meet intent of Table 2. This table is based on the following assumptions: Span/deflection ratio is equal to or greater

Design and analysis of solar panel support structure A review Paper

analysis of solar panel support structure made out from mild steel. They conducted this work as a part of project of Mahindra Reva Ltd. Named as "solar 2 car". The result shows that the solar panel

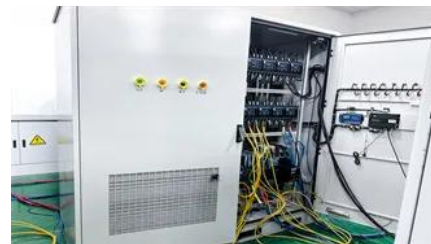


DESIGN OF PHOTOVOLTAIC STRUCTURES

Design, supply and installation of metal structures supporting photovoltaic panels.

Photovoltaic support layout review table

The literature reveals a wealth of review studies on topics related to PV O& M, as well as bibliometric studies within the solar PV research domain. Table 1 classifies the



Photovoltaic System Design Review

These system evaluations are based on the complete design and documentation packages that accompany the application for design review.

Contact Us

For off-grid system quotes, technical support, or partnerships, please visit:
<https://www.kephamatraining.co.za>