

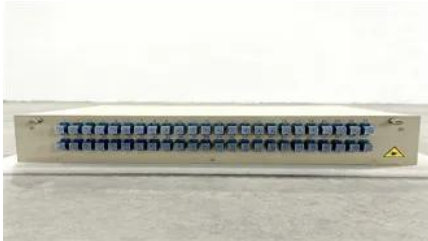
New energy battery cabinet structure classification



Overview

In this comprehensive 2026 guide, BOT Electric breaks down the anatomy of a battery storage cabinet, explores its core functions in modern grids, and highlights its diverse applications from EV charging stations to factory peak shaving.

New energy battery cabinet structure classification



How to open link in a new tab in HTML?

Note I previously suggested blank instead of `_blank` because, if used, it'll open a new tab and then use the same tab if the link is clicked again. However, this is only because, as GolezTrol

When to use "new" and when not to, in C++?

You should use `new` when you wish an object to remain in existence until you delete it. If you do not use `new` then the object will be destroyed when it goes out of scope.



What is the 'new' keyword in JavaScript?

The `new` keyword in JavaScript can be quite confusing when it is first encountered, as people tend to think that JavaScript is not an object-oriented programming language. What is it? What problems

[New site design and philosophy for Stack Overflow: Starting February](#)

Ah, but new experts will rise up and embrace the new, friendly Stack Overflow that they have always wanted. And maybe rediscover the same things the bitter, hateful old guard found.





[Utility-scale battery energy storage system \(BESS\)](#)

Battery storage systems are emerging as one of the potential solutions to increase power system flexibility in the presence of variable energy resources, such as solar and wind, due to their unique

Push local Git repository to new remote including all branches and tags

Whether you push all the branches or just some of them, Git will perform the entire operation without creating any new local branches, and without making changes to your working



[How does the new operator work in JavaScript?](#)

The new operator uses the internal [] method, and it basically does the following: Initializes a new native object Sets the internal [] of this object, pointing to the Function prototype

[Energy Storage Cabinet: From Structure to Selection for Bankable](#)

An energy storage cabinet pairs batteries, controls, and safety systems into a compact, grid-ready enclosure. For integrators and EPCs, cabinetized ESS shortens on-site work, simplifies compliance,



[IR N-4: Modular Battery Energy Storage Systems: 2022 CBC and](#)

This Interpretation of Regulations (IR) clarifies



specific code requirements relating to battery energy storage systems (BESS) consisting of prefabricated modular structures not on or inside a building for

THE CLASSIFICATION OF NEW ENERGY BATTERY CABINETS ARE

Energy storage using batteries is accepted as one of the most important and efficient ways of stabilising electricity networks and there are a variety of different battery chemistries that may be used.



The Classification Of New Energy Battery Cabinets Are

The development of clean energy and the progress of energy storage technology, new lithium battery energy storage cabinet as an important energy storage device, its structural design and performance

New Energy Battery Cabinet Brand Classification

Discrete energy storage cabinets are standalone units designed for specific applications, providing modular and scalable energy storage solutions. Combined energy storage cabinets integrate multiple



THE CLASSIFICATION OF NEW ENERGY BATTERY CABINETS ARE

South African leader in photovoltaic energy storage systems, BESS solutions, mobile power containers, EMS management systems, commercial storage, industrial storage,

containerized storage, and

[How do I push a new local branch to a remote Git repository and track](#)

How do I: Create a local branch from another branch (via `git branch` or `git checkout -b`). Push the local branch to the remote repository (i.e. `publish`), but make it trackable so that `git pull` and



[Difference between 'new operator' and 'operator new'?](#)

A new expression is the whole phrase that begins with new. So what do you call just the "new" part of it? If it's wrong to call that the new operator, then we should not call "sizeof" the sizeof

[Move the most recent commit \(s\) to a new branch with Git](#)

A graphical version manager where you would just add a tag for the new branch without dealing with what seems to me obscure and archaic syntax would be such a relief. My kingdom and



[Unity: Conflict between new InputSystem and old EventSystem](#)

You probably tried to import a new input system package for multiple input devices compatibility. These type of errors are due to conflict between old and new input system packages

[Battery Storage Cabinet Guide: Structure, Functions](#)

In this comprehensive 2026 guide, BOT Electric breaks down the anatomy of a battery storage cabinet, explores its core functions in modern



HANDBOOK FOR ENERGY STORAGE SYSTEMS

The BMS protects the battery from harmful operation and maximises its lifespan by constantly monitoring the battery's parameters such as voltage, current, temperature, State-of-Charge 3

New Energy Battery Cabinet Framework

New Energy Battery Cabinet Framework How to design an energy storage cabinet? The following are several key design points: Modular design: The design of the energy storage cabinet should adopt a



Contact Us

For off-grid system quotes, technical support, or partnerships, please visit: <https://www.kephamatraining.co.za>