

Is there a big difference in battery replacement for communication base stations



Overview

Integrated base stations are typically larger and require higher capacity batteries, while distributed base stations, being smaller and more numerous, present different power needs. The report analyzes the market share, growth drivers, and challenges specific to each application.

Is there a big difference in battery replacement for communication



Battery Management Systems for Telecom Base

To ensure continuous operation during power outages or grid fluctuations, telecom operators deploy robust backup battery systems. However,

Main Causes of Shortened Battery Lifespan in Base Stations

Once installed in communication base stations, these batteries typically do not require replacement for several years. Therefore, it is crucial to enhance battery maintenance to improve its



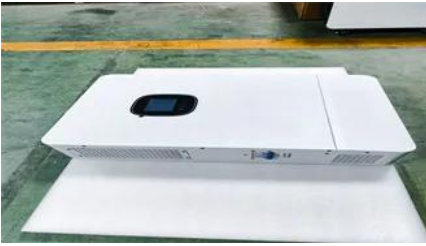
THERE , English meaning

We can use there at the start of a clause as a type of indefinite subject. This means that we can put the actual subject at the end of the clause and so give it emphasis or focus (underlined below):

What Are the Key Considerations for Telecom Batteries in Base

Which Battery Types Are Used in Telecom Base Stations? VRLA and lithium-ion dominate telecom base stations. VRLA batteries are cost-effective, maintenance-free, and tolerant to overcharging, making





Telecommunication Battery

Lithium-ion telecom batteries cover the entire lifecycle of a base station, eliminating the need for mid-life replacement, significantly reducing



There: Definition, Meaning, and Examples

There (interjection): Used for emphasis or reassurance. The word "there" can refer to a place, be used to introduce a sentence, or act as a filler when stating something exists.



there adverb

THERE Definition & Meaning

Note: Do not confuse there, which has meanings that mostly relate to a literal or abstract location, with the words their and they're. Their has to do with what belongs to or is associated with them (" their



Subject/Verb Agreement

There are many questions. There is a question. 10. Collective nouns are words that imply more than one person but that are considered singular and take a singular verb, such as group, team, committee,



THERE Definition & Meaning , Dictionary

THERE definition: in or at that place (here). See examples of there used in a sentence.

Definition of there adverb in Oxford Advanced American Dictionary. Meaning, pronunciation, picture, example sentences, grammar, usage notes, synonyms and more.



[There Definition & Meaning , YourDictionary](#)

Used to introduce a clause or sentence. There are numerous items. There must be another exit.

[Optimization of Communication Base Station Battery](#)

In the communication power supply field, base station interruptions may occur due to sudden natural disasters or unstable power supplies. This



[Communication Batteries: Why Telecom Base Stations Have Unique](#)

This article clarifies what communication batteries truly mean in the context of telecom base stations, why these applications have unique requirements, and which battery technologies are

[Global Communication Base Station Battery Trends: Region-Specific](#)

Integrated base stations are typically larger and require higher capacity batteries, while distributed base stations, being smaller and more numerous, present different power needs.



Contact Us

For off-grid system quotes, technical support, or partnerships, please visit:
<https://www.kephamatraining.co.za>