

Inverter DC end ripple



Overview

Analytical expressions are derived for the dc-link voltage switching ripple amplitude and its maximum value over the fundamental period. Different values of modulation index and output phase angle have been considered and different diagrams are presented.

Inverter DC end ripple



[DC-Link Current and Voltage Ripple Analysis Considering](#)

In this paper, a method has been proposed for the analysis of dc-link ripple current rms value and



[What Is a Power Inverter and How Does It Work?](#)

A power inverter is an electronic device that converts direct current (DC) into alternating current (AC). DC power, typically stored in batteries or generated by solar panels, flows in only one

What Is an Inverter?

A power inverter is an electrical component that converts direct current (DC) to alternating current (AC). Inverters are an essential part of many electronic devices and systems, from



Amazon : Inverter

Discover high-powered inverters to power your home, RV, or off-grid setup. Enjoy pure sine wave output, safety features, and versatile connectivity.



[Power Inverters: What Are They & How Do They Work?](#)



[DC-link low-frequency current and voltage ripple](#)

This reflects in current and voltage low-frequency ripple on the dc

What is an Inverter? An inverter (or power inverter) is defined as a power electronics device that converts DC voltage into AC voltage. While DC power is common in small gadgets, most



474689_1_En_4_Chapter 45.

With reference to Fig. 4.1, a detailed analysis of the dc-link current and voltage ripple for the H-bridge

[What Does an Inverter Do and How Does It Work?](#)

This comprehensive guide explains what an inverter is, how it works, where it's used, and the benefits it provides in enhancing power stability, sustainability, and convenience.



[What Does An Inverter Do? Complete Guide To Power Conversion](#)

An inverter - the crucial component that bridges the gap between different types of electrical power. As an electrical engineer with over 15 years of experience in power systems, I've

[How do inverters convert DC electricity to AC?](#)

Appliances that need DC but have to take power from AC outlets need an extra piece of equipment called a rectifier, typically built from electronic components called diodes, to convert from

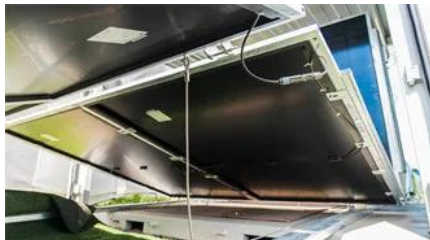


[Analysis of dc-Link Voltage Switching Ripple in Three](#)

Analytical expressions are derived for the dc-link voltage switching ripple amplitude and its maximum value over the fundamental period. Different

Power Inverter Buying Guide , Eaton

What is an Inverter? A power inverter is a device that converts low-voltage DC (direct current) power from a battery to standard household AC (alternating current) power.



[\(PDF\) Analysis of DC-Link Voltage Ripple in Voltage](#)

In this paper, the DC-link voltage ripple is analyzed for an inverter without electrolytic capacitor.

[Analysis and Reduction of Current and Voltage Ripple in DC Link for](#)

Analysis and Reduction of Current and Voltage Ripple in DC Link for Three-Level NPC Inverter-Fed



[Inverter, Solar Inverter, Home Power Inverter , inverter](#)



Inverter is an online shop of all kinds of power inverters with affordable price, buy your inverter for home, car and solar plant now.

Power inverter

A power inverter, inverter, or invertor is a power electronic device or circuitry that changes direct current (DC) to alternating current (AC). The resulting AC frequency obtained depends on the particular



Inverter DC ripple voltage specification

I'm trying to get some clarity on the DC ripple specifications relating to Victron

Contact Us

For off-grid system quotes, technical support, or partnerships, please visit:
<https://www.kephamatraining.co.za>