

# IP54 Outdoor Cabinet 100kWh Financing



## IP54 Outdoor Cabinet 100kWh Financing

---



### [50KW / 100KWH Outdoor Cabinet Energy Storage](#)

Our 50KW/100KWH outdoor cabinet energy storage system, with its excellent performance and thoughtful design, is the ideal choice for outdoor energy

### IP54 Enclosures

Our IP54 enclosures have a high level of protection against particles, and a fair amount of protection against water. All of our enclosures rigorously comply with the guidelines, so you can count on



### [What is IP54? The dust and water protection rating explained](#)

What is IP54? We'll break down the specifics of an IP54 rating below but to summarise: IP54 reflects that a device is protected from limited amounts of dust and water splashes.

### The Complete Guide To IP Rating

A product with an IP54 rating is protected against quantity of dust that could interfere with the normal operation of the product but is not fully dust tight. The product is completely protected against solid



### [Guide to IP54 Enclosures: Protection](#)



## [Levels & Standards](#)

IP54 enclosures are designed to protect your equipment from dust and splashing water. They're not fully waterproof or dustproof, but they offer enough protection for many common

## [Costco Ip54 Waterproof Outdoor Cabinet Project Financing Delivery](#)

Get Costco Ip54 Waterproof Outdoor Cabinet Project Financing products you love delivered to you in as fast as 1 hour with Costco Same-Day same-day delivery or curbside pickup.



## **IP code**

It is defined by the International Electrotechnical Commission (IEC) under the international standard IEC 60529 which classifies and provides a guideline to the degree of protection provided by

## [IP Ratings Explained: Understanding IP54, IP64, IP65, and IP67](#)

What is IP54 rating? An IP54 rating indicates that a device offers a moderate level of protection against solid particles and water exposure. This level is common in products intended for indoor or lightly

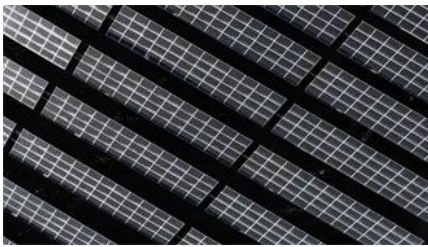


## [What is IP54? A Complete Guide to Electrical Enclosure Protection](#)

IP54 is one of the most common ingress protection (IP) ratings used for electrical guide cabinets, industrial enclosures, and outdoor equipment. It defines a specific level of defense against dust and

## [Understanding IP Ratings: IP51 vs IP53 vs IP54 vs IP55](#)

A detailed comparison of IP51, IP53, IP54, and IP55 ratings, explaining their protection levels against dust and liquids for electrical enclosures.



## **What Is IP54 Rating? [Answered 2026]**

The IP54 rating offers a clear measure of balanced protection. It blocks most dust and keeps out water splashes, making it ideal for earbuds, portable speakers, smart home lights, and

## [50kW-100kWh Energy Storage System Outdoor Cabinet Battery as](#)

All-in-one 50kW/100kWh ESS cabinet for solar storage, backup, and peak shaving. Outdoor-rated, air-cooled, and easy to install with full EMS control.



## [High-Performance 50kW 100kWh Outdoor Cabinet Energy Storage](#)

Enhance your energy storage capabilities with our cutting-edge 50kW/100kWh outdoor cabinet energy storage system. With a rated AC power of 50kW and a rated capacity of 100kWh, this system boasts

## [What do IP44, IP54 and IP55 mean? Ingress Protection \(IP\) Rating](#)

What does IP54 mean? IP54 means that the

product is protected against quantity of dust that could interfere with the normal operation of the product but is not fully dust tight.



### [100kWh All-in-One C&I BESS Cabinet 50kW LiFePO4 Hybrid Solar](#)

Discover premium 100kWh All-in-One C&I BESS Cabinet with 50kW LiFePO4 hybrid solar integration, IP54 air cooling and true UPS for commercial & industrial sites.

### [Industrial Outdoor IP54 100kwh 215kwh 261kwh Commercial Energy](#)

High Capacity & Efficiency: 105kW/215kWh with LiFePO4 for long-term reliability. Comprehensive Safety: Multi-layer protection & fire detection for risk-free operation. Global Compliance: CE, VDE,



### [50kW/100kWh outdoor All-in-one all-in-one cabinet](#)

50kW/100kWh outdoor cabinet ESS solution (KAC50DP-BC100DE) is designed

## Contact Us

---

For off-grid system quotes, technical support, or partnerships, please visit:  
<https://www.kephamatraining.co.za>