

How to replace the battery energy storage system of a communication base station



Overview

This guide outlines the design considerations for a 48V 100Ah LiFePO4 battery pack, highlighting its technical advantages, key design elements, and applications in telecom base stations. Why Choose LiFePO4 Batteries?

.

How to replace the battery energy storage system of a communicat



string

58 There's no need to use replace for this. What you have is an encoded string (using the string_escape encoding) and you want to decode it:

Prettier ask me to replace ??? with

3 I think this is caused by Prettier being configured to use spaces instead of tabs to indent and then your code editor using tabs. So Prettier wants you to replace those tabs with spaces.



[communication base station battery- Telecom Base Station](#)

Communication Base Station Batteries , LiFePO4 Backup Power Communication base station batteries are critical backup power systems, primarily utilizing Li

[How do I replace all line breaks in a string with elements?](#)

Learn how to replace all line breaks in a string with elements using JavaScript on Stack Overflow.



python



Battery Management Systems for Telecom Base

To ensure continuous operation during power outages or grid fluctuations, telecom operators deploy robust backup battery systems. However,



Difference between String replace () and replaceAll ()

What's the difference between java.lang.String 's replace() and replaceAll() methods, other than the latter uses regex? For simple substitutions like, replace . with /, is there any difference?

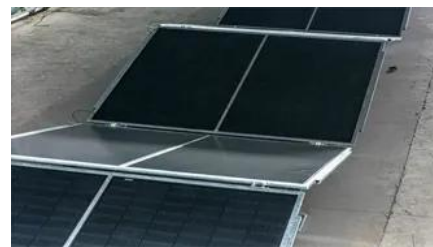


7 This function uses both the str.replace() and re ndall() functions. It will replace all occurrences of pattern in string with repl in a case-insensitive way.



Replace part of a string with another string

There's a function to find a substring within a string (find), and a function to replace a particular range in a string with another string (replace), so you can combine those to get the effect you want:



How do I replace a character at a specific index in JavaScript?

0 You can use the following function to replace Character or String at a particular position of a String. To replace all the following match cases use function.

[Replace multiple characters in one replace call](#)

160 If you want to replace multiple characters you can call the `String.prototype.replace()` with the replacement argument being a function that gets called for each match. All you need is an object



[DALY base station energy storage BMS solution for](#)

Compatible with various communication protocols such as CAN, RS485, and UART, you can install a display screen, and link to a mobile APP through

How to use `string.replace ()` in python 3.x

The `string.replace()` is deprecated on python 3.x. What is the new way of doing this?



Energy Storage for Communication Base

The one-stop energy storage system for communication base stations is specially designed for base station energy storage. Users can use the energy storage system to discharge during load peak

[Telecom Battery Backup System . Sunwoda Energy](#)

A telecom battery backup system is a comprehensive portfolio of energy storage

batteries used as backup power for base stations to ensure a reliable and stable power supply.

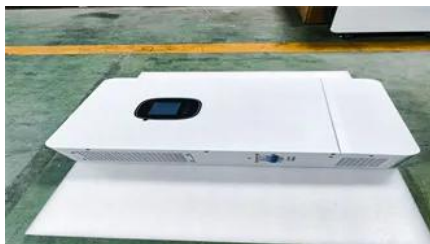


[Telecom Base Station Energy Storage Systems: Workflow and Value](#)

As mobile communication networks continue to expand, energy storage systems for telecom base stations have become a critical foundation for network reliability and operational

BMS for Telecom Base Station BES-01

The MOKOEnergy BMS keeps your telecom battery backup power supply optimized for reliability. Our compact BMS board actively balances cells,



[Telecom Base Station Backup Power Solution: Design](#)

Discover the 48V 100Ah LiFePO4 battery pack for telecom base stations: safe, long-lasting, and eco-friendly. Optimize reliability with our design

Contact Us

For off-grid system quotes, technical support, or partnerships, please visit:
<https://www.kephamatraining.co.za>