

# How to install UPS voltage stabilizer battery cabinet



## Overview

---

This manual contains important instructions that should be followed during installation, operation, and maintenance of your Liebert® Large UPS Battery System.

## How to install UPS voltage stabilizer battery cabinet

---



### BC Series UPS Battery Cabinets

The ZincFive BC Series UPS Battery Cabinet can house up to 39 batteries to support various UPS runtimes and voltage requirements. This manual covers the 37 to 39 battery solutions.

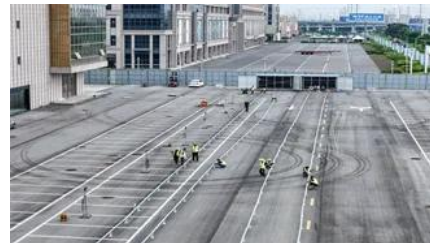


### [Security Plus Extended Battery Cabinet Instruction Manual](#)

The following instructions are for UPS systems and battery cabinets. UPS power and battery cabinet power are separate inputs to the system and matching the correct power source to the power inlet

### Google Chrome Help

Official Google Chrome Help Center where you can find tips and tutorials on using Google Chrome and other answers to frequently asked questions.



### [Assemble circuit of voltage stabilizer and UPS , NIMI , DIGITAL](#)

NIMI - Government of India proudly presents another powerful addition to our skill-enhancement series for the ITI ecosystem and vocational training sector!Th



### Download and install Google Chrome



How to install Chrome Important: Before you download, check if Chrome supports your operating system and you've met all other system requirements.

## Install and manage extensions

Install an extension Important: You can't add extensions when you browse in Incognito mode or as a guest. Open the Chrome Web Store. Find and select the extension you want. Select Add to Chrome.



## [/15/20KVA UPS Battery Cabinet Installation and Operation Manual](#)

Installation or replacement of batteries must be located in a SERVICE ACCESS AREA: The service manual shall include the following instructions for battery replacement and disposal:

## Fix issues when you install Chrome

Download the installation file again. To install Chrome again, use the new file. If the installation still isn't working, use an offline installer.  
Computers with multiple user accounts.  
Computers with one user



## [How to Install a UPS: Step-by-Step Guide , SecurePower](#)

Install your UPS correctly with our step-by-step guide. From unboxing to testing, learn how to set up your backup power system safely and efficiently.

## [Use your phone or computer to install apps & content on other devices](#)

Tap Install. Tip: To find an app that's compatible with a specific device, use the device search filters in the Google Play Store. Use your computer to install an app on another device To install an app on



## [Eaton 93PM L \(208V\) UPS and Samsung Gen 3 Battery Cabinet](#)

The installation manuals of the UPS and battery cabinet describe how to install and operate the Eaton 93PM-L (208V) UPS and battery cabinets. Read and understand the procedures described in the

## **BC Series UPS Battery Cabinets**

he requirements defined below. This battery cabinet must be installed according to local and national regulations. Install the battery cabinet according to the following standards



## [UBC80 Battery Cabinet Installation, Operation, & Maintenance](#)

When installing this power system, follow all applicable federal, state and local regulations as well as industry guidelines to insure proper system installation. Only qualified electricians or DC power

## **Sign in to Chrome**

In some countries, you may need to manage your linked Google services to use Chrome history for personalization and other services.





### [Easy UPS 3S Modular Battery Cabinet 208 V Installation](#)

Installation manual containing information on how to install and connect the product

### [Get Android apps & digital content from the Google Play Store](#)

Find the Google Play Store app Get Android apps & digital content from the Google Play Store Use your phone or computer to install apps & content on other devices Pre-order or pre-register for apps,



### [Install & use Android apps on your Chromebook](#)

Install app updates If you get a notification on the bottom right of your screen that says "Updates available," select Update or Update all. You can also set up automatic updates for apps and the Play

### [Installation Procedure for UPS and Lithium-ion Battery Cabinets](#)

Lithium-ion battery cabinet (s): Connect the Power Cables. Lithium-ion battery cabinet (s): Route the Signal Cables to the Switchgear, Rack BMS, and System BMS Ports.



### [Install apps on another device from your phone, tablet, or computer](#)

To more easily manage apps across multiple devices, you can use your phone, tablet, or computer to install apps on another device, such

as your watch, TV, or car.

## Contact Us

---

For off-grid system quotes, technical support, or partnerships, please visit:  
<https://www.kephamatraining.co.za>