

How to identify the positive and negative lines of photovoltaic panels



Overview

You can identify the positive and negative terminals on a solar panel by checking for visual markings like '+' and '-' symbols, colored wires (typically red for positive, black for negative), using a multimeter to measure voltage, and consulting the manufacturer's documentation.

How to identify the positive and negative lines of photovoltaic panels

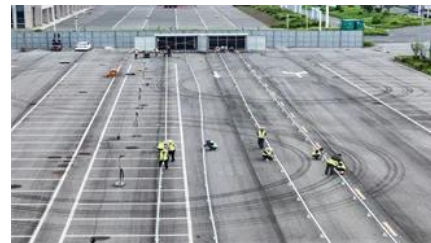


[Which Side of Photovoltaic Glass Is the Positive Side: A Technical](#)

When installing solar panels, identifying the positive side of photovoltaic glass is as crucial as knowing which wire goes where in a battery. Just like mismatched wires can short-circuit a device, incorrect

[Solar Panel Positive and Negative \(Diode + Voltmeter\)](#)

In this article, you will learn how to determine the positive and negative terminals of a solar panel. We will also show you how to check solar panel polarity, and how to connect a solar



[How to distinguish positive and negative poles in photovoltaic panels](#)

How to distinguish positive and negative poles in photovoltaic panels Know how to identify positive solar panel connectors with this step-by-step guide. From using markings and coloring to testing

[How to identify positive and negative terminals on a solar panel?](#)

You can identify the positive and negative terminals on a solar panel by checking for visual markings like '+' and '-' symbols, colored wires (typically red for positive, black for negative), using a multimeter to





[How to check the positive and negative of solar panel wiring](#)

To check the positive and negative of solar panel wiring, follow these steps clearly: 1. Identify the terminals correctly, 2. Use a multimeter for proper measurements, 3. Observe polarity

How to Identify the Positive and Negative Lines of Photovoltaic Panels

Identifying photovoltaic panel polarity is the electrical equivalent of reading hieroglyphics for many beginners. But fear not - today we'll turn you into a solar Sherlock, complete with multimeter



[How to identify positive and negative solar panel polarity](#)

If you connect the positive and negative terminals incorrectly, you'll face reduced efficiency, potential equipment damage, or even safety hazards. Let's break down the most reliable methods to identify

[Solar Panel Positive and Negative \(Diode + Voltmeter\)](#)

To prevent this, ensure all PV modules have correct wiring in terms of positive/negative polarities. Refer back to step one and identify which wire corresponds to positive voltage.



[How do you know if a solar panel is positive or negative](#)



If the number displayed on the screen is positive, such as "38.5" or "+38.5", this directly declares: the wire touched by the red probe is the positive pole (+), and the wire touched by the

How to Check Solar Panel Polarity (Reverses + Fixes)

To prevent this, ensure all PV modules have correct wiring in terms of positive/negative polarities. Refer back to step one and identify which wire corresponds to positive voltage.



How to Check Solar Panel Polarity

Polarity relates to the positive and negative terminals of the panel. Accurately recognizing this polarity during the connection of solar panels is crucial to ensure their optimal

Contact Us

For off-grid system quotes, technical support, or partnerships, please visit:
<https://www.kephamatraining.co.za>