

How long does it take to charge a 100Ah battery with a 200W solar panel



How long does it take to charge a 100Ah battery with a 200W solar



Solar Panel Charging Time Calculator

Easily find out how long your solar panels take to charge any battery. Use our free solar panel charging time calculator for fast and accurate results.

[How Long to Charge 100Ah Battery with 200W Solar Panel: Tips for](#)

How long does it take to charge a 100Ah battery with a 200W solar panel? Charging a 100Ah battery using a 200W solar panel can take approximately 6 to 8 hours under ideal sunlight

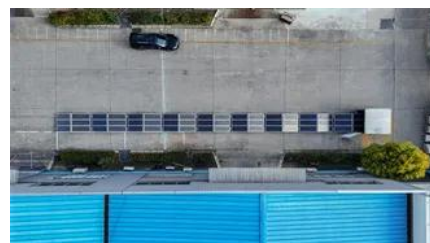


[Solar Battery Charge Time Calculator \(12v, 24v, 48v\)](#)

Use our solar battery charge time calculator to find out how long it will take to recharge your battery using solar panels.

[How Long to Charge a 100Ah Lithium Battery With a 200W Solar Panel?](#)

A 200W solar panel typically charges a 100Ah lithium battery from empty to full in approximately 6 to 9 hours of high-intensity, direct sunlight. However, laboratory conditions rarely



[Solar Panel Charging Time for Battery](#)



[Calculator](#)

Our Solar Panel Charging Time Calculator helps you calculate the estimated hours and days required to fully charge your battery based on panel wattage, battery capacity (Ah), voltage, and charge

[How Long To Charge A 100Ah Battery With a 200W Solar Panel?](#)

Although a straightforward calculation might suggest 5-6 hours, a 200W panel can fully charge a 12V 100Ah battery from a 50% discharge in approximately 1-2 full days. This realistic



[How Long to Charge 100ah Battery with 200W Solar Panel: A](#)

Discover how long to charge 100ah battery with 200w solar panel in this comprehensive guide. Learn about solar panels, charging times and more.

[Charging Time: How Long to Charge a 100Ah Battery with a 200W](#)

A 200-watt solar panel can charge a 100Ah battery in about 5 hours with good sunlight. If you have 7.5 hours of sunlight, it can efficiently charge three 100Ah batteries, two 150Ah batteries, or



[How long to charge 100ah battery with 200w solar panel?](#)

Assuming you're using an MPPT solar charge controller, a 12V-200W solar panel would take 10 to 20 daytime hours to charge a completely depleted 12V-100Ah battery.

Solar Battery Charge Time Calculator

Formula: Charge Time (hours) = Battery Capacity (Ah) / (Solar Panel Wattage * Solar Insolation * Panel Efficiency) For example, consider a battery of 100Ah capacity, a solar panel of



Contact Us

For off-grid system quotes, technical support, or partnerships, please visit:
<https://www.kephamatraining.co.za>