

How important are the parameters of photovoltaic solar panels



Overview

Key specifications to consider when evaluating solar panels are the wattage or power rating, efficiency percentage, operating voltage, current output, and the temperature coefficient that indicates how the panel's performance is affected by temperature changes.

How important are the parameters of photovoltaic solar panels



What does !important mean in CSS?

What does !important mean in CSS? Is it available in CSS 2? CSS 3? Where is it supported? All modern browsers?

What are the implications of using "!important" in CSS?

Using the !important keyword in CSS is a way to prevent other meddlesome programs from taking liberties to interpret your html/css in a way other than what you want. For example when someone



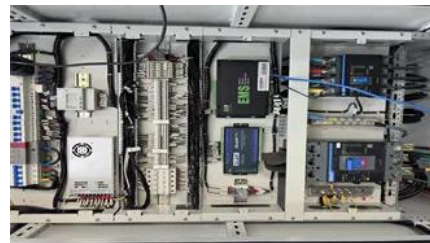
When to use the !important property in CSS

The use of !important is very import in email creation when inline CSS is the correct answer. It is used in conjunction with @media to change the layout when viewing on different platforms.

How to apply !important using .css ()?

```
$("#elem").css("width", "100px !important");
```

This does nothing; no width style whatsoever is applied. Is there a jQuery-ish way of applying such a style without having to overwrite cssText



Solar Panel Datasheet Specifications Explained



The article covers the key specifications of solar panels, including power output, efficiency, voltage, current, and temperature coefficient, as presented in solar

[What are the main performance parameters of solar](#)

The efficiency of a solar panel is defined as the maximum output power (PM) divided by the input power (PIN). It is measured as a percentage



Gmail Help

Official Gmail Help Center where you can find tips and tutorials on using Gmail and other answers to frequently asked questions.

[Analysis of specifications of solar photovoltaic panels](#)

This study of PVP parameters is necessary for modeling and analysis of power and electrical facilities and systems with a significant share of generation by solar energy.



[Parameters of a Solar Cell and Characteristics of a PV](#)

Solar cell maximum power PM depends upon the voltage that it develops across the cell terminal and the current it can supply. The cell area is one of the

[PV Panel Specifications: Understanding](#)

Solar Panel Technical

You need to know what these numbers mean before picking a solar panel. The right photovoltaic panel specifications help you match your energy needs and roof space.



More important than !important (a higher level !important)?

In general, it is possible to override a declaration that has !important by using a rule that also has it and that has higher specificity. However, a declaration in a style attribute has, by



Key Parameters that Define Solar Cell Performance

What is the importance of solar panel parameters? The parameters defining solar cell and panel performance are important in evaluating device

Solar Panel Parameters Explained

That's why we help our partners and customers understand the key specifications behind every solar panel. Below, we break down the most important parameters that influence module



Solar Panel Ratings Explained

Solar panel ratings are crucial for understanding how solar panels perform and what they're capable of. Whether you're setting up a DIY system or





Make !important the whole .class selector

No, it's not possible. !important is thought to be an instrument of last resort and as such should be used sparingly. !important ing whole selectors would caricature that idea. If you need to

Importance markers in Gmail

Gmail uses several signals to decide which messages to automatically mark as important, including: Whom you email, and how often you email them Which emails you open Which emails you reply to



Key Operational Parameters for Solar Plant Efficiency:

By continuously monitoring these critical parameters, solar plant operators can ensure that the plant operates efficiently, complies with grid

Material UI and TypeScript: How to use !important?

Material UI and TypeScript: How to use !important? Ask Question Asked 7 years, 5 months ago Modified 2 years, 10 months ago



Contact Us

For off-grid system quotes, technical support, or partnerships, please visit:
<https://www.kephamatraining.co.za>