

Electricity distribution kathmandu



Overview

Nepal Electricity Authority (NEA), founded on 16 August 1985, is the parent generator, transmitter and retail distributor of electric power under the supervision of the government of Nepal. NEA has its own power plants.

Electricity distribution kathmandu



Brittany Torbert, Esq.

View Brittany Torbert, Esq.'s profile on LinkedIn, a professional community of 1 billion members.

Nepal Electricity Authority Website

The Bagmati Provincial Office, headquartered at the NEA Head Office, oversees electricity distribution services across ten districts of Bagmati



Utility Rates and Fees , Provo, UT

Explore Provo City's current utility rates and fees for electricity, water, wastewater, stormwater, and garbage collection. Access detailed rate schedules and information to manage your utility services

Electricity

Electricity is the set of physical phenomena associated with the presence and motion of matter possessing an electric charge. Electricity is related to magnetism, both being part of the



City Utilities , Provo, UT

We provide utility services for power, water, and trash, making it easy to manage all your essential needs in one place. If you're moving and need to stop services, please contact us to

schedule the

Brittany Torbert

Find reviews, ratings, directions, business hours, and book appointments online.



Current Outages , Provo, UT

Provo Power has a 24/7 power outage dispatch. Our dispatchers monitor our grid and equipment and receive notifications of any outages from our OMS (Outage Management System).

[Brittany Renee Torbert, Lawyer in Roseville, California](#)

Roseville, California attorney Brittany Renee Torbert. Legal practice includes personal injury and litigation. Research legal experience, education, professional associations, jurisdictions and contact



[Nepal Electricity Authority launched its own data center](#)

In order to be able to provide services to commercial companies in the future, the authority has put into operation an international data center along with the load dispatch center

Nepal Electricity Authority

Nepal Electricity Authority (NEA), founded on 16 August 1985, is the parent generator,





Power , Provo, UT

To sign up for city utilities (electricity, water, waste water, garbage, etc.), please call or visit 311 Customer Service located at Provo City Hall (445 W Center Street). You can also dial 311 within city

[Minister Basnet Inaugurated State-of-the-Art Control and Data Center](#)

In addition to the data center, an infrastructure structure has been built that can monitor, regulate and control the underground distribution system under construction to automate the power



Electric Rates , Provo, UT

Each schedule below has the updated rates as it pertains to each customer. Is Your Utility Bill Unusually High? Our Troubleshooting a High Utility Bill (PDF) can help you determine why your bill might have

[NEA begins first phase of underground electricity](#)

KATHMANDU, Feb 18: The Nepal Electricity Authority (NEA) has started its first phase of the underground electricity distribution system by laying underground



Law Office of Brittany Torbert

The Law Office of Brittany Torbert serves clients throughout Northern California. She is committed to being an attentive and supportive counselor,

and bringing creative and effective problem solving

[NEA Launches Data Center in Kathmandu: A New Era of](#)

This system aims to automate the power distribution network in the Kathmandu Valley, enabling efficient management, monitoring, and control of power distribution down to the customer's



Brittany Torbert

How likely are you to recommend Brittany Torbert to a friend or a colleague? Brittany Torbert is a lawyer in Roseville and works for Law Office of Brittany Torbert. The company has 1 lawyer registered with

[NEA Launched Its Own State-of-the-art International Data Center](#)

In addition to the data center, an infrastructure structure has been built that can monitor, regulate and control the underground distribution system under construction to automate the

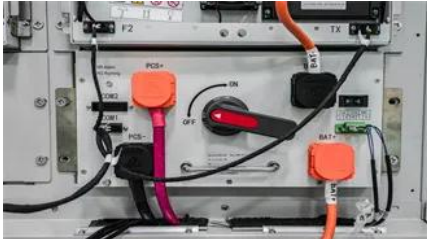


[NEA Inaugurates Electric Distribution Control and Data Center in](#)

The new three-story building, constructed using prefabricated containers, houses the monitoring, regulation, control, and security operations of Kathmandu Valley's underground electric

Find My Utility

To search for electric service providers, uncheck Utah Water Service Areas in the Layers toolbar and check "Utah Electric Service Areas".



Brittany Renee Torbert # 314905

Address: Law Office of Brittany Torbert, 2999 Douglas Blvd, Ste 180, Roseville, CA 95661-4219. Phone: 916-283-7100 , Fax: 916-587-9101. The table below shows an attorney's license

Office Locations , California Tenant Law

Founded by Kenneth H. Carlson, J.D. (CA State Bar #93602) in 1980, our practice exclusively represents tenants. Each office is staffed by experienced attorneys specializing in



Brittany Renee Torbert Profile

Find California attorney Brittany Renee Torbert in their Roseville office. Practices Landlord or tenant. Find reviews, educational history and legal experience.

Electricity

Electricity is defined as the flow of electric charge, primarily electrons moving through a conductor. Its primary function is to power countless devices and systems by converting energy into usable forms.



Brittany Renee Torbert, Roseville



California Attorney on Lawyer Legion

Licensed for 8 years, Brittany Renee Torbert is a lawyer in Roseville California who attended California Western School of Law

[Electricity , Definition, Facts, & Types , Britannica](#)

Electricity, phenomenon associated with stationary or moving electric charges. Electric charge is a fundamental property of matter and is borne by elementary particles. In electricity the



Rocky Mountain Power

Manage energy costs with our flexible support resources. Take precautions to stay safe and prepare for potential emergencies. Find resources to help with your new home, business or construction project.

Brittany Renee Torbert

Brittany Renee Torbert is a lawyer serving Roseville in Employment & Labor, Personal Injury and Litigation cases. View attorney's profile for reviews, office locations, and contact information.



Contact Us

For off-grid system quotes, technical support, or partnerships, please visit:
<https://www.kephamatraining.co.za>