

# Distributed Energy Storage Lithium Battery Instructions



## Overview

---

This data sheet describes loss prevention recommendations for the design, operation, protection, inspection, maintenance, and testing of stationary lithium-ion battery (LIB) energy storage systems (ESS) greater than 20 kWh.

## Distributed Energy Storage Lithium Battery Instructions

---

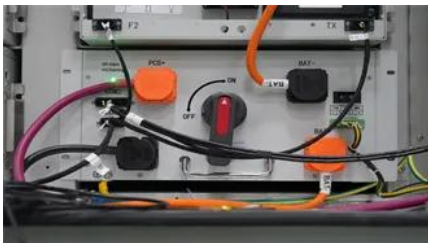


### [Windows 10 Event ID 10010 and 10016 Errors With DistributedCOM](#)

I am having a number of events that seem to be located repeatedly with the source:  
DistributedCOM Event ID: 10010 and Event ID: 10016 also getting rep

### [Store apps close immediately, Event 10010 with DistributedCOM](#)

Update: Just came back from re-installing and re-registering all Windows Store Apps (even the Store itself I noticed) and still having the same issue. Did a reboot just in case after



### **805-0092 AES 210HV**

The installation, configuration, servicing, and operation of this energy storage system should only be performed by qualified personnel in coordination with local authorities having jurisdiction (AHJ) and

### **Event ID 10016, DistributedCOM**

Also, the outcome is that, under normal conditions, the Microsoft Distributed Transaction Coordinator (MSDTC) service establishes a secure connection with the local System (Computer), not



### **DistributedCOM Event ID 10000**



What should I do? Log Name: SystemSource: Microsoft-Windows-DistributedCOMDate: 4/27/2020 4:26:30 PMEvent ID: 10000Task Category: NoneLevel: ErrorKeywords: ClassicUser: SAM

## DistributedCOM Error. Solved

Distributed Component Object Model (DCOM) is a proprietary Microsoft technology for communication between software components on networked computers. DCOM, which originally



## DistributedCOM permission settings Error 10016 -should I resolve this?

Inside W10's Event Viewer, I see an error with ID of 10016 (DistributedCOM). Its error description is - The application-specific permission settings d

## [Lithium-ion Battery Storage Technical Specifications](#)

This document is meant to be used as a customizable template for federal government agencies seeking to procure lithium-ion battery energy storage systems (BESS).



## DistributedCOM Error. Solved

What u did by deleting all entries in the registry for GUID {1B562E86-B7AA-4131-BADC-B6F3A001407E} in the eventlog is it not the same as what Vaio 7 did by setting 0 to the dword to

## Need Help with DistributedCOM 10010

In this video, i will guide you on how to fix DistributedCOM Event ID 10016 error in Windows 10 and Windows 11.



## [Do I need "Distributed Link Tracking Client"?](#)

Do I need "Distributed Link Tracking Client"? Read up on it, cant quite make it out if it's to my disadvantage (and how) in every day Computer life if I have it disabled.

## Event ID 10016, DistributedCOM

Hi @ parsonm To solve COM errors, if you don't follow the Microsoft note, get a cli utility by Microsoft called dcomperm. Its source code is included with the Microsoft Windows SDK for



## **Lithium Battery (DBU50B-N12A3, 01076026)**

The lithium battery supplies backup power to communications equipment when the third-party power system has no grid power input, thereby ensuring reliable power supply for service operation.

## Contact Us

---

For off-grid system quotes, technical support, or partnerships, please visit:  
<https://www.kephamatraining.co.za>