

Can Solar Integrated Devices Be Installed in Skylight Tile Sheds



Overview

Can Panels Be Mounted Without Breaking Tiles?

Yes, in many cases. Methods exist that lift tiles or use replacement tiles with integrated flashings to avoid widespread damage.

Can Solar Integrated Devices Be Installed in Skylight Tile Sheds



[How to use the Verb 'can' in English conversation](#)

In this blog article we look at when and how you use the word can in English conversation. Get free tips from an expert teacher of English for Adults, at the British Council

Can , ENGLISH PAGE

"Can" is one of the most commonly used modal verbs in English. It can be used to express ability or opportunity, to request or offer permission, and to show possibility or impossibility.



[can you install solar panels on tile roofs](#)

The answer is a resounding yes, but with a crucial caveat: the installation process is dramatically different, requires specialized equipment, and demands a higher level of expertise than

CAN Definition & Meaning , Dictionary

CAN definition: to be able to; have the ability, power, or skill to. See examples of can used in a sentence.



[Installing Solar Panels on Tile Roofs: What](#)



[CAN definition in American English, Collins English Dictionary](#)

You use can to indicate that someone has the ability or opportunity to do something. Don't worry yourself about me, I can take care of myself. I can't give you details because I don't actually have any details.

The short answer is yes-but it requires careful planning and the right installation technique to ensure your roof remains intact and your solar



Installing Solar Panels on Tile Roofs

In this article, we will explore the compatibility of tile roofs with solar panels, the benefits and challenges associated with such installations, the available installation methods, and important considerations

[Solar Panel Installation on Tile Roofs: A Comprehensive Guide for](#)

This guide explores the best practices, advantages, and considerations for integrating solar panels with tile roofs effectively while maintaining roof integrity and maximizing solar performance.



CAN Definition & Meaning

The use of can to ask or grant permission has been common since the 19th century and is well established, although some feel may is more appropriate in formal contexts. May is relatively

[Solar Panels On Concrete Tile Roof: Complete Guide](#)

This comprehensive guide covers everything you need to know about installing solar panels on concrete tile roofs, including detailed installation



[Can Solar Panels Be Installed on a Tile Roof?](#)

Solar panels can be successfully installed on a tile roof, but the process is significantly more complex and requires specialized knowledge and equipment compared to standard asphalt

CAN , English meaning

Can is usually used in standard spoken English when asking for permission. It is acceptable in most forms of written English, although in very formal writing, such as official instructions, may is often



[Solar Panels on Tile Roof: Installation Feasibility and Best Practices](#)

This guide explains tile roof compatibility, installation methods, warranty implications, costs, and how homeowners can choose the right installer. It emphasizes practical steps, potential

[How to Use the Modal "Can" in the English Grammar , LanGeek](#)

The modal verb or modal auxiliary verb can is a commonly-used word. It is used to add more information about the function of the main verb.



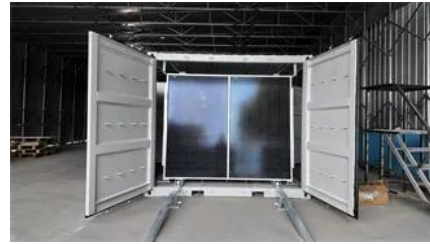


[Can You Install Solar Panels on Tile Roof? Complete 2025 Guide](#)

Several proven methods exist for safely installing solar panels on tile roofs. The optimal approach depends on your specific tile type, roof pitch, and local climate conditions.

Can Definition & Meaning

Used to indicate possession of a specified power, right, or privilege. The president can veto congressional bills.



[How to install solar panels on a tile shed , NenPower](#)

Before embarking on the installation of solar panels, it is imperative to conduct a thorough evaluation of the tile shed's structural integrity. The

[Can Solar Panels Be Installed on Tile Roofs](#)

This article details methods, roof types, costs, durability considerations, and tips to ensure a successful installation on clay, concrete, or slate tile roofs. Understanding the right



Contact Us

For off-grid system quotes, technical support, or partnerships, please visit:
<https://www.kephamatraining.co.za>