

Battery grounding wire standard for solar telecom integrated cabinets



Overview

122 is the primary reference for determining the minimum size of equipment grounding conductors based on the rating of the overcurrent protection device.

Battery grounding wire standard for solar telecom integrated cabinet



[Solar telecom integrated cabinet ground potential](#)

Different techniques exist, each suited to specific solar battery configurations and site requirements. We will discuss these grounding methods in detail, including best practices

Battery issues

I've had both batteries replaced (with the correct models), done a 100 mile trip, overnight smart battery charge, charging voltage is fine, system messages cleared but I am still getting "low

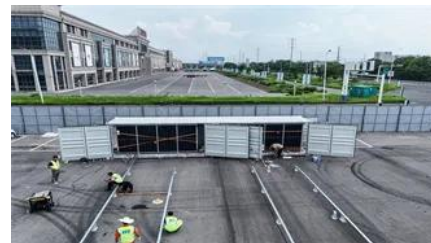


[solar telecom integrated cabinet lithium-ion battery grounding wire](#)

Different techniques exist, each suited to specific solar battery configurations and site requirements. We will discuss these grounding methods in detail, including best practices

Main Battery Change

Going to change the service battery in my 15 V40cc D2. Anything I need to be ware of or look out for ??



Low battery charge message

The low battery charge message relates to the main battery. On vehicles with stop/start



systems and intelligent alternators, the vehicle battery is designed to operate at around 80% SOC, to

Multiple Warning Lights/Error Messages/Battery deterioration

TBH I would look at a replacement battery on the back of that info - but can't you get one from where you bought it? I don't know what a compliance centre is but does the vehicle come with



Replacement battery

Hiya, I have an early 2014 D2 cross country automatic. It keeps complaining about battery level, even after our (rare but very long drives). So I think the battery is shot. Funnily, when I put my

PV FOR TELECOM

All 3 wires (Positive, Negative and Ground) must be run to the Apollo Solar PVT Cabinet. The Earth connection in the Combiner Box is the important connection to the Surge Protection Device.



Generic Telecommunications Bonding and Grounding (Earthing)

The purpose of this Standard is to enable and encourage the planning, design, and installation of generic telecommunications bonding and grounding systems within premises with or without prior

[Low battery charge error , Volvo V40 Forums](#)

Hello everyone, I just bought my first car, a 2014 Volvo V40 T3, and a warning appears on the dashboard that says 'low battery charge.' The car is recently



"Low Battery Charge" HELP

Have the battery checked at dealers - and just using a multimeter on the battery won't show duff cells in the battery. A new battery-cured mine - any decent auto-electric garage could do it.

Ground Wire Size Chart NEC 2026: Complete

NEC Table 250.122 is the primary reference for determining the minimum size of equipment grounding conductors based on the rating of the



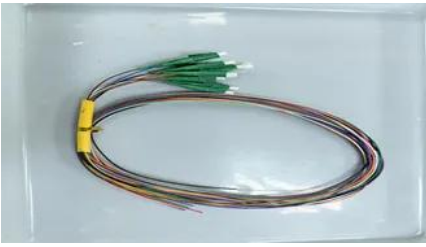
Secondary Battery

My main battery just died, had it replaced with same, and car kept giving me Battery charging, so no stop start. When stop/start worked, it was for about 10 sec, and car would start, with

Main Battery Replacement

Since that battery also supplies power to the ECU memory when the car is switched off, as well as powering the stop/start system , don't ignore it. Like the main battery, Volvo recommend





Household Battery Recycling

Household battery recycling locations Lead-acid batteries, or "automotive type batteries," are banned from disposal. Consumers may bring lead-acid batteries to any Wisconsin retailer that sells these

Contact Us

For off-grid system quotes, technical support, or partnerships, please visit:
<https://www.kephamatraining.co.za>