

# Airport uses Bhutanese energy storage container 100ft



## Overview

---

That may be peanuts compared to mega-airports like London Heathrow or New York's JFK, but it's a huge figure for the landlocked country of Bhutan, which received just 316,000 tourists in 2019. Currently, all foreign visitors fly into Paro International Airport (PBH), near the capital.

## Airport uses Bhutanese energy storage container 100ft

---

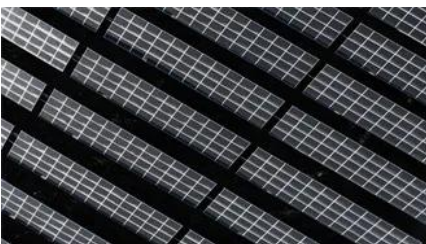


### [Gelephu International Airport: Bhutan's Sustainable Gateway To The](#)

Bhutan, the Land of the Thunder Dragon, is taking a bold leap into the future with the upcoming Gelephu International Airport. Designed by the globally renowned Bjarke Ingels Group

### [THIMPHU ENERGY STORAGE RESERVOIR BHUTAN'S BOLD LEAP](#)

Portable energy storage products are a safe, portable, stable, and environmentally friendly small energy storage system that uses built-in high energy density lithium-ion batteries to provide a stable AC and



### [May 2025: 1.5MW / 2.41MWh Rooftop Photovoltaic and Energy](#)

May 2025: 1.5MW / 2.41MWh Rooftop Photovoltaic and Energy Storage Project at Paro Airport, Bhutan - Successful Cases - Sunshare Power - Empowering Homes and Industries with

### **Bhutan Inaugurates First-of-Its-Kind 1.5 MW Rooftop Solar Hybrid Power**

It can fully meet the airport's daily electricity needs and still send about 60 per cent extra power to the national grid. With this, Paro International Airport has become a green energy producer and consumer, saving about Nu





### [Bhutan Airport Uses Solar-Powered Containers for Ultra-High](#)

This project will be Bhutan's first and largest grid-connected utility-scale solar power plant, marking a significant leap in the country's renewable energy ambitions.

### [Gelephu International Airport: A Vision of Bhutanese Culture and](#)

BIG (Bjarke Ingels Group) has unveiled its design for Bhutan's Gelephu International Airport, a major development to be featured at the 2025 Venice Architecture Biennale.



### [Rewriting Aviation History : Paro Airport Goes Green](#)

By making Paro Airport green, Bhutan sends a powerful signal: sustainability is not a policy-it is the operational standard. International travelers now arrive in a facility powered entirely

### [Thimphu Container Energy Storage System: A Sustainable Solution](#)

Containerized storage systems offer the flexibility Bhutan needs to maintain its carbon-negative status while powering economic growth. From grid stabilization to solar integration, these modular units



### [BIG Unveils Design for Bhutan's Gelephu International Airport, to Be](#)

BIG (Bjarke Ingels Group) has unveiled plans for



Bhutan's Gelephu International Airport, a project that aims to combine traditional craftsmanship with contemporary design.

### [Bhutan airport uses solar energy storage cabinets for ultra-high](#)

As Bhutan accelerates its transition to renewable energy, photovoltaic (PV) systems paired with energy storage are emerging as game-changers. This article explores how solar energy storage solutions



## Contact Us

---

For off-grid system quotes, technical support, or partnerships, please visit:  
<https://www.kephamatraining.co.za>